

Royal Placemats

Skill level: Intermediate



Featuring: FreeSpirit Elizabeth by Tula Pink
 Designed by: Coats Design Team, Lucy Fazely

Technique:	Patchwork, Piecing, Quilting
Brand:	FreeSpirit
Crafting time:	Weekend

Set a table fit for a queen!

Finished Size of Project: Four 14" x 18" placemats (35.56cm x 45.72cm)

Fabric Requirements

Fabrics from Free Spirit Elizabeth Collection by Tula Pink

(A) PWTP062.TARTX	Fat Quarter or 1/3 yard (.31m) (46cm x 54cm)
(B) PWTP063.TARTX	1/2 yard (.46m)
(C) PWTP065.TARTX	1 yard (.92m)
(D) PWTP066.TARTX	1/2 yard (.46m)
(E) PWTP067.TARTX	1/2 yard (.46m)
(F) PWTP068.TARTX	Fat Eighth or 1/8 yard (.15m) (23cm x 54cm)
(G) PWTP069.CITRU	1/3 yard (.31m)
(H) CSFSESS.CREAM	1/2 yard (.46m)
(BACKING) PWTP064.TARTX	1 1/8 yards (1.1m)

Additional Requirements

Template plastic
 Coats All Purpose threads
 Four 16" x 20" (40.64cm x 50.8cm) pieces of quilt batting

Cutting Directions:

Note: WOF—Width of Fabric, LOF—Length of Fabric.
Trace triangle patterns onto template plastic and cut out neatly. Label each template and transfer color codes to both sides of the templates.

(A) PWTP062.TARTX (Elizabeth)

Referring to color placemat image, fussy cut one 8½" (21.59cm) tall x 9½" (24.13cm) wide piece with Elizabeth motif centered

(B) PWTP063.TARTX (floral)

Cut one 14½" x WOF (36.83cm x WOF) strip, subcut one 9½" x 14½" (24.13cm x 36.83cm) piece and two 6½" x 7½" (16.51cm x 19.05cm) pieces

(C) PWTP065.SKYX (overall)

Cut one 7½" x WOF (19.05cm x WOF) strip, subcut into one 7½" x 18½" (19.05cm x 47cm) strip
Eight 2½" x WOF (6.35cm x WOF) strips for binding

(D) PWTP066.TARTX (shell)

Cut one 14½" x WOF (36.83cm x WOF) strip, subcut one 6½" x 14½" (16.51cm x 36.83cm) piece and one 7½" x 18½" piece (19.05cm x 47cm)

(E) PWTP067.TARTX (dots)

Cut one 7½" x WOF (19.05cm x WOF) strip, subcut into one 7½" x 18½" (19.05cm x 47cm) strip
Cut one 3½" x WOF (8.895cm x WOF) strip, subcut two 3½" x 12½" (8.89cm x 31.75cm) pieces and one 3½" x 8½" (8.89cm x 21.59cm) piece

(F) PWTP068.TARTX (mini diamonds)

Cut one 3½" x 14½" (8.89cm x 36.83cm) strip

(G) PWTP069.CITRU (stripe)

Cut one 7½" x WOF (19.05cm x WOF) strip, subcut into one 7½" x 18½" (19.05cm x 47") strip and two 6½" x 7½" (16.51cm x 19.05cm) pieces with the stripe running along the 6½" (16.51cm) edges

(H) CSFSESS.CREAM (solid)

Cut two 6½" x WOF (16.51cm x WOF) strips, subcut four 6½" x 14½" (16.51cm x 36.83cm) strips

(BACKING) PWTP064.TARTX (floral tonal)

Cut two 18" x WOF (45.72cm x WOF) strips, subcut four 18" x 21" (45.72cm x 53.34cm) pieces

Instructions:

Placemat #1



1. Refer to the color coding on the templates to assist in properly placing the templates on fabric. When using the Corner Template, discard the triangles cut away

under the template. When using the Large or Small Triangle Template discard the piece cut away and use the piece under the template.

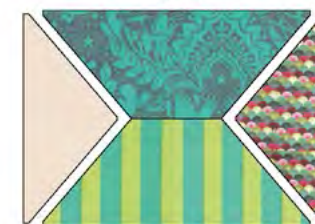
2. Use Corner Template to cut away two corners of one each of the Fabrics **C** and **G** 7½" x 18½" (19.05cm x 47cm) strips and Large Template to trim corners from one each Fabrics **D** and **H** 6½" x 14½" (16.51cm x 36.83cm) strips. **Diagram 1**

Diagram 1



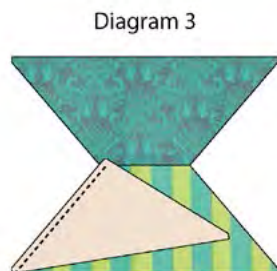
3. Stitch the Fabrics **C** and **G** pieces together along their short inner edges, starting and stopping ¼" (.64cm) away from outer edges and backstitching. **Diagram 2**

Diagram 2

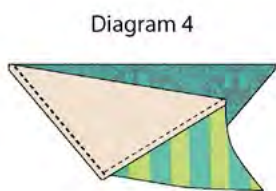


Royal Placemats

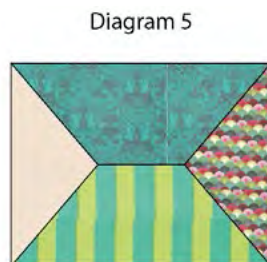
4. With right sides together, align a short side of the Fabric **H** triangle to the side of the Fabric **G** piece. Stitch pieces together, starting from the outer corner and stitching to the center seam, leaving the last $\frac{1}{4}$ " (.64cm) at point unstitched. **Diagram 3**



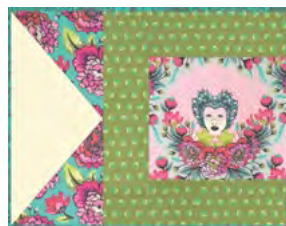
5. Remove the piece from the sewing machine. Reposition the piece so the other short side of the Fabric **H** triangle is aligned with the adjoining side of the Fabric **C** piece. Stitch together from the center seam to outer corner. Press flat. **Diagram 4**



6. Repeat to add the Fabric **D** triangle on the opposite end of the placemat to complete the first placemat top. **Diagram 5**

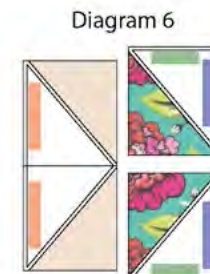


Placemat #2



1. Use Large Template to trim corners from a Fabric **H** $6\frac{1}{2}$ " x $14\frac{1}{2}$ " (16.51cm x 36.83cm) strip. Use the Small

Triangle Template to trim each of the Fabric **B** $6\frac{1}{2}$ " x $7\frac{1}{2}$ " (16.51cm x 19.05cm) pieces. **Diagram 6**



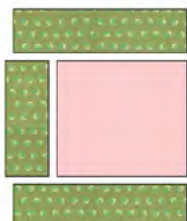
2. Sew the Fabric **B** triangles to the Fabric **H** triangle. **Diagram 7**



3. Stitch a Fabric **E** $3\frac{1}{2}$ " x $8\frac{1}{2}$ " (8.89cm x 21.59cm) piece to side of the Fabric **A** $8\frac{1}{2}$ " x $9\frac{1}{2}$ " (21.59cm x 24.13cm) piece. Add Fabric **E** $3\frac{1}{2}$ " x $12\frac{1}{2}$ " (8.89cm x 31.75cm)

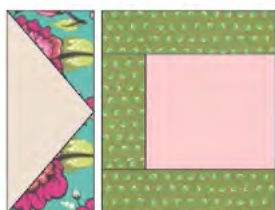
pieces to top and bottom. **Diagram 8**

Diagram 8

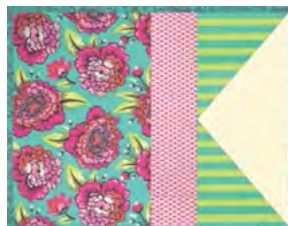


4. Sew the two sections together to complete the second placemat top. **Diagram 9**

Diagram 9

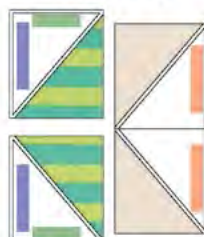


Placemat #3



1. Use Large Template to trim corners from a Fabrics **H** 6½" x 14½" (16.51cm x 36.83cm) strip. Use the Small Triangle Template to trim each of the Fabric **G** 6½" x 7½" (16.51cm x 19.05cm) pieces. **Diagram 10**

Diagram 10



2. Sew the Fabric **G** triangles to the Fabric **H** triangle. **Diagram 11**

Diagram 11

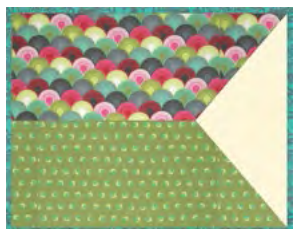


3. Sew the Fabric **F** 3-1/2" x 14-1/2" (8.89cm x 36.83cm) strip between the triangle section and the Fabric **B** 9½" x 14½" (24.13cm x 36.83cm) piece. **Diagram 12**

Diagram 12

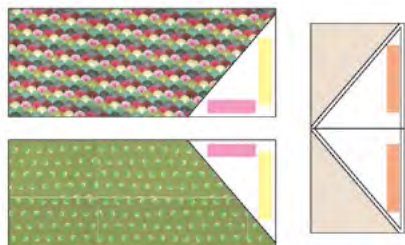


Placemat #4



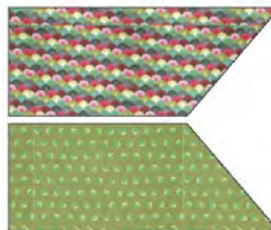
4. Use Corner Template to cut away one corner of one each Fabrics **D** and **E** 7½" x 18½" (19.05cm x 47cm) strips and Large Template to trim corners from Fabric **H** 6½" x 14½" (16.51cm x 36.83cm) strip. **Diagram 13**

Diagram 13



5. Stitch the Fabrics **D** and **E** pieces together along their inner edges, stopping ¼" (.64cm) away from the inner point and backstitching. **Diagram 14**

Diagram 14



6. Referring to Steps 4 and 5, add the Fabric **H** triangle to complete the fourth placemat top. **Diagram 15**

Diagram 15



Finishing

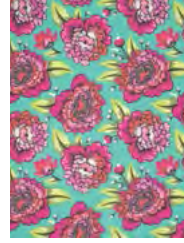
1. Layer an 18" x 21" (45.72cm x 53.34cm) backing, batting and placemat top. Quilt as desired.
2. Prepare binding from two 2½" x WOF (6.35cm x WOF) Fabric **C** strips. Sew strips together into one long binding strip. Press strip in half lengthwise, wrong sides together.
3. Carefully trim backing and batting even with quilt top.
4. Leaving an 8" (20.32cm) tail of binding, sew binding to top of quilt through all layers matching all raw edges. Miter corners. Stop approximately 12" (30.48cm) from where you started. Lay both loose ends of binding flat along quilt edge. Where these two loose ends meet, fold them back on themselves and press to form a crease. Using this crease as your stitching line, open both ends of the binding and sew the two open ends right sides together along the crease. Trim seam to ¼" (.64cm) and press open. Finish sewing binding to quilt.
5. Turn binding to back of placemat and blind stitch in place.
6. Repeat to finish remaining three placemats.

Fabric Key

- (A) PWTP062.TARTX
- (B) PWTP063.TARTX
- (C) PWTP065.TARTX
- (D) PWTP066.TARTX
- (E) PWTP067.TARTX
- (F) PWTP068.TARTX
- (G) PWTP069.CITRU
- (H) CSFSESS.CREAM



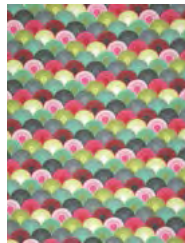
(A)



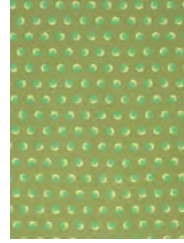
(B)



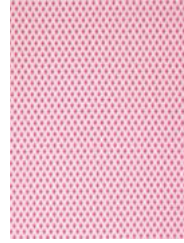
(C)



(D)



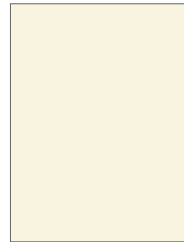
(E)



(F)



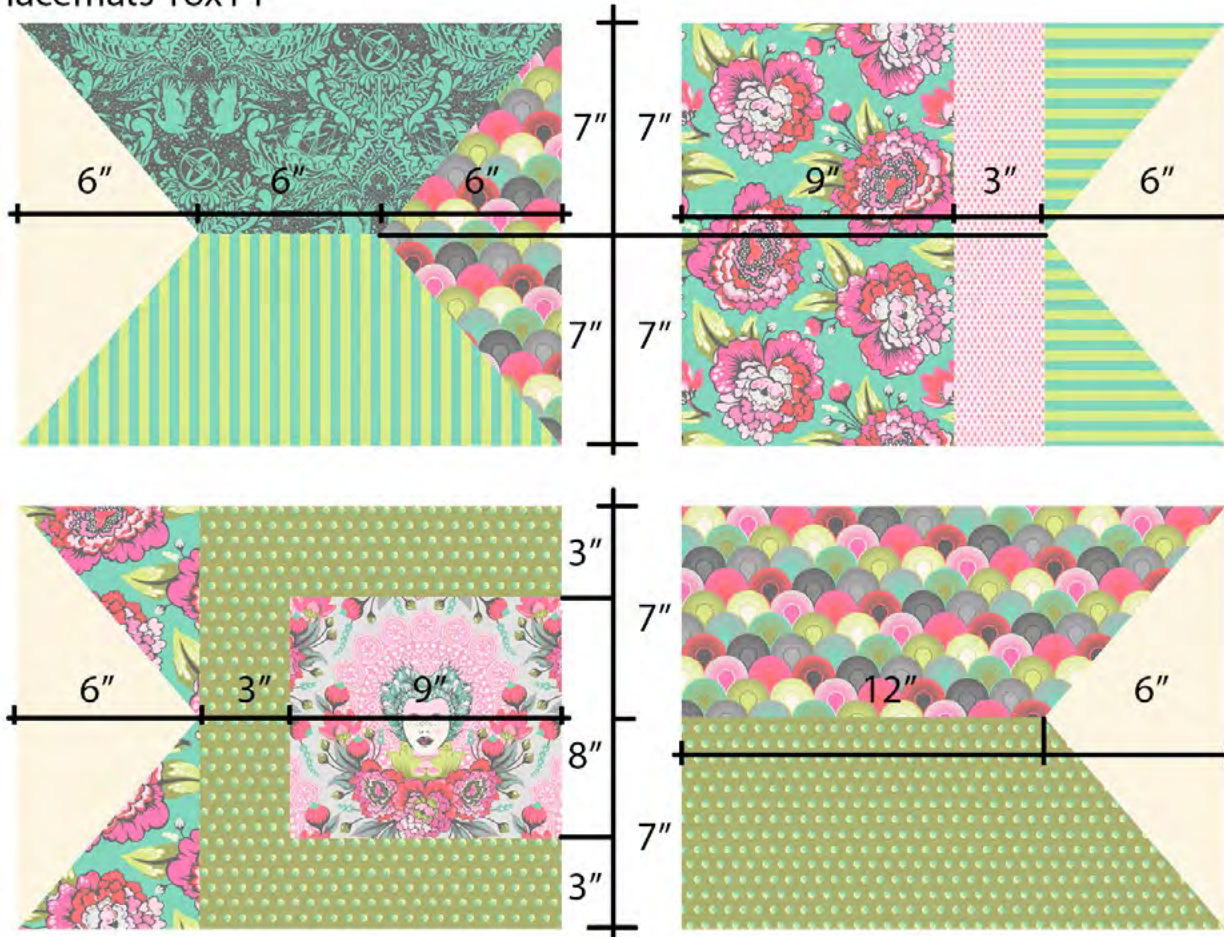
(G)



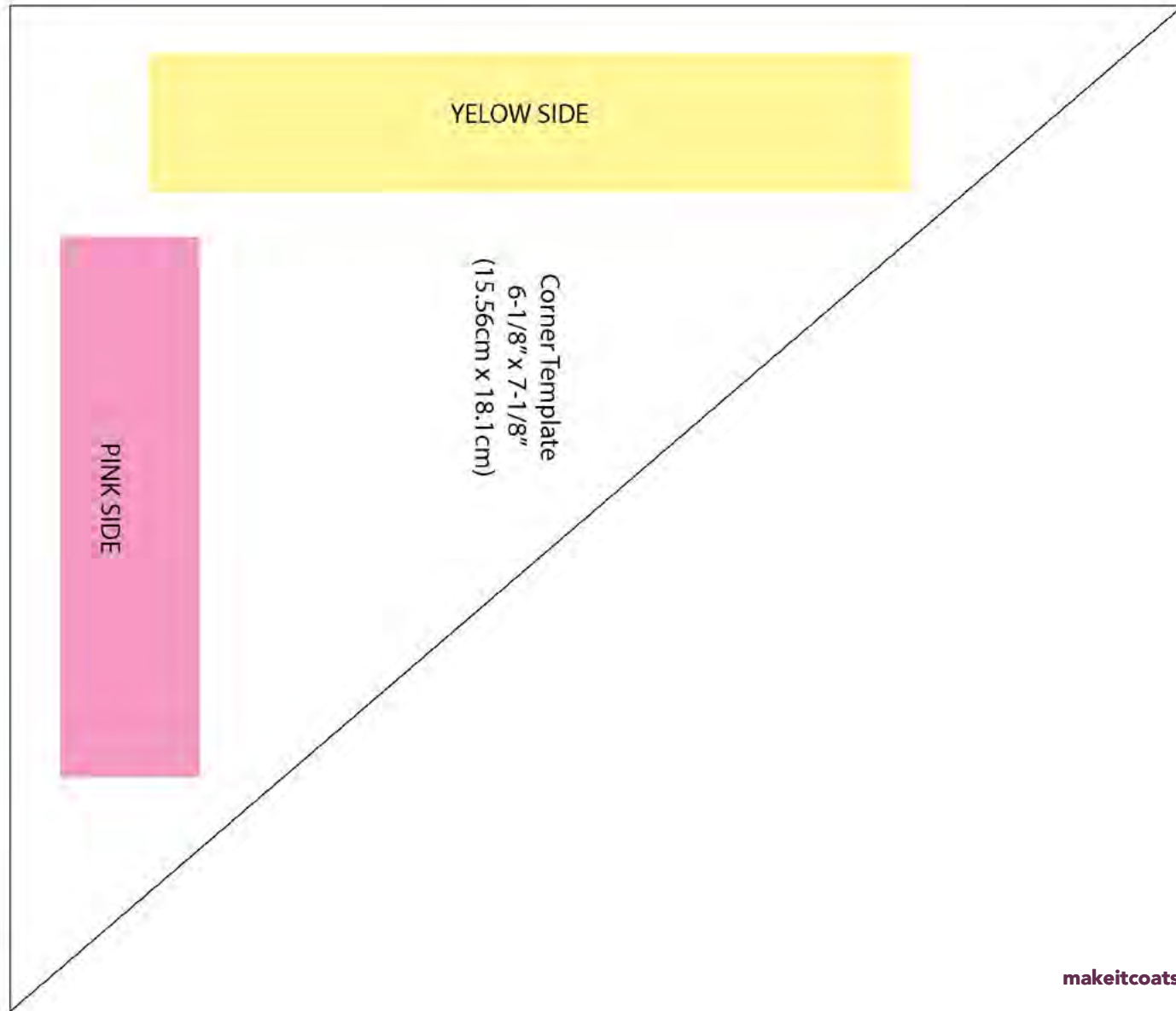
(H)



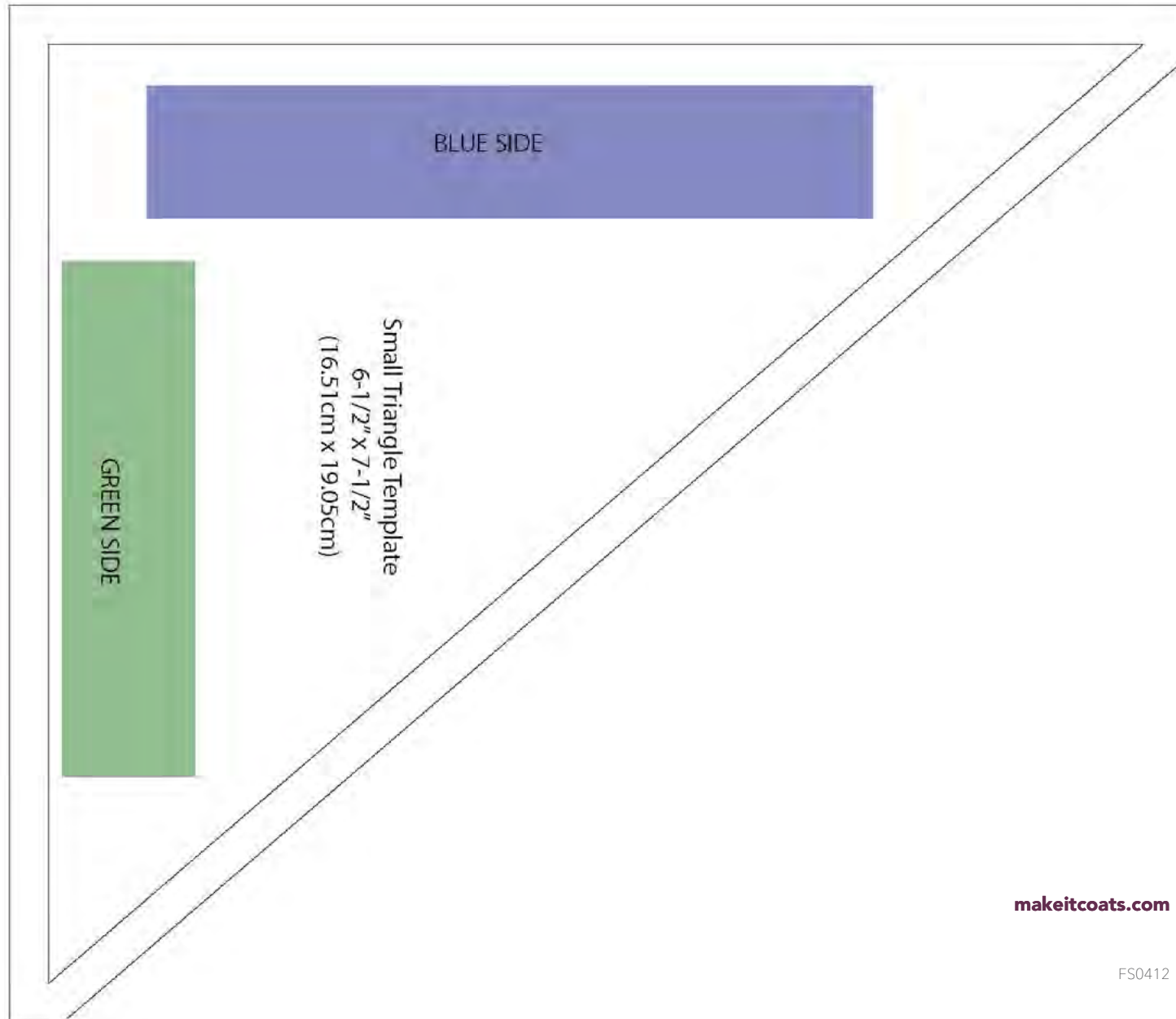
Placemats 18x14"



Royal Placemats



Royal Placemats



Royal Placemats

